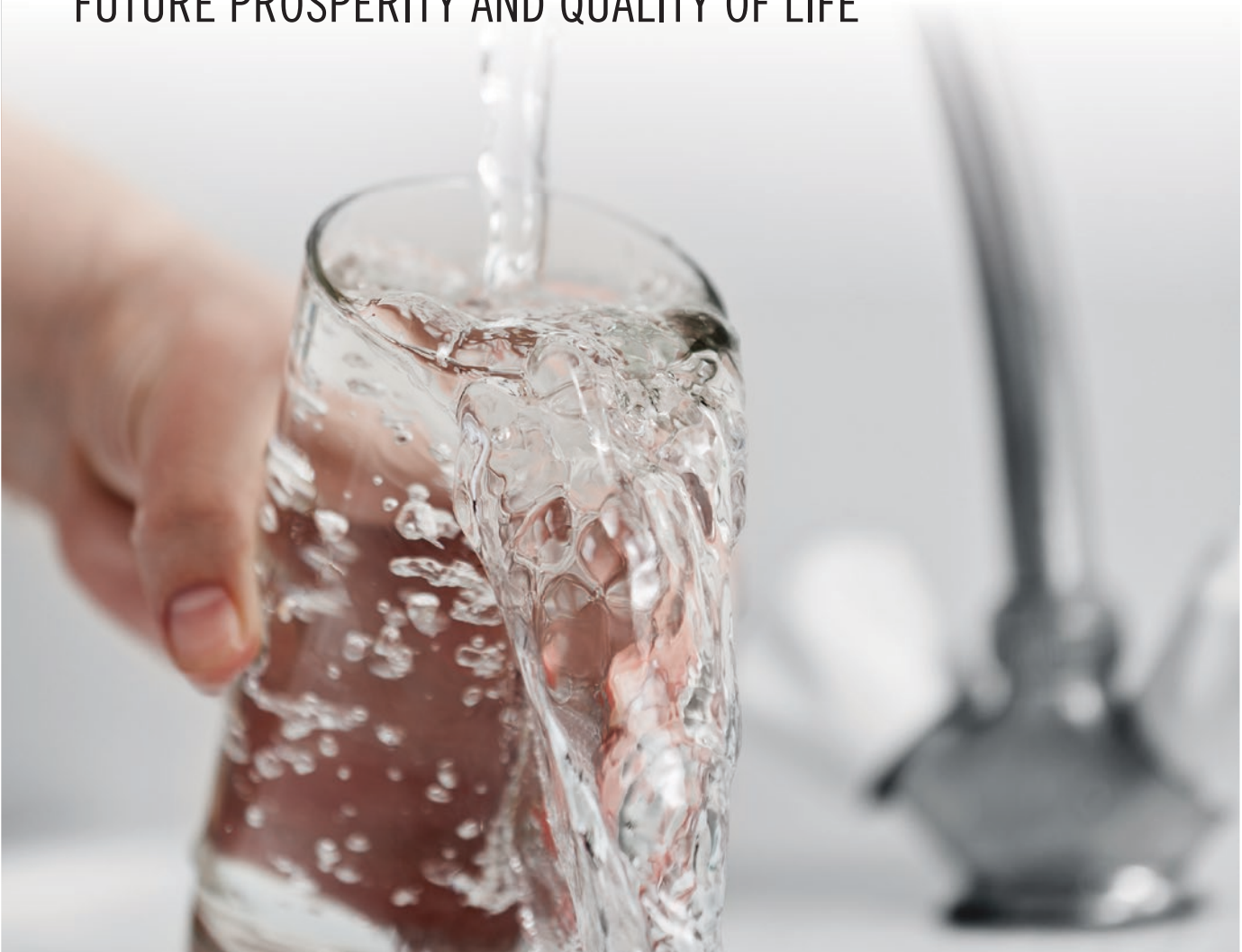


REGION C WATER PLANNING: A CRITICAL PROCESS FOR NORTH CENTRAL TEXAS' FUTURE PROSPERITY AND QUALITY OF LIFE



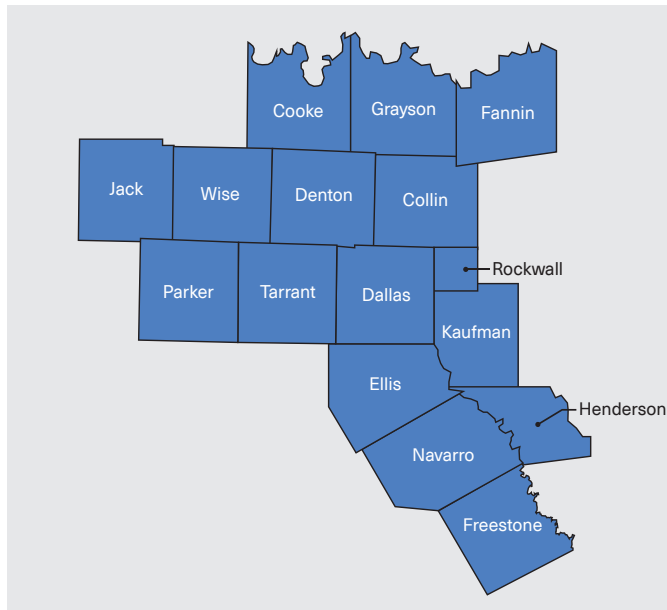
You may have heard about the work of the Region C Water Planning Group, but do you realize just how critical it is to the long-term future of the North Central Texas region?

This brochure is designed to provide a helpful overview of the vital work being performed in the current, five-year, regional water planning process, which will ultimately produce an updated 2021 Region C Water Plan, an essential component of the 2022 State Water Plan.



WHO IS THE REGION C WATER PLANNING GROUP?

The Region C Water Planning Group (RCWPG) is one of 16 regional water planning groups created by the Texas Water Development Board (TWDB) to help develop a comprehensive water plan for Texas through 2070. Each water planning group is responsible for preparing and adopting a regional water plan for its area. The RCWPG is made up of 22 members representing 12 different interest groups.



WHAT IS REGION C'S GEOGRAPHIC AREA?

Region C covers all or part of 16 counties in North Central Texas, including Collin, Cooke, Dallas, Denton, Ellis, Fannin, Freestone, Grayson, Henderson (Trinity River Basin portion), Jack, Kaufman, Navarro, Parker, Rockwall, Tarrant and Wise, with a total regional population exceeding 7 million and approximately 350 Water User Groups region-wide.

HOW DOES REGIONAL WATER PLANNING WORK?

Since 1997, when the Texas Legislature enacted Senate Bill 1 (SB 1), Texas has developed a State Water Plan to address the state's growing water needs through a bottom-up, regionally driven planning process, facilitated by regional water planning groups across the state. SB 1 established five-year planning cycles, resulting in the production of Region C's first regional water plan in 2001, and subsequently updated plans in 2006, 2011 and 2016.

The RCWPG is now working on a 2021 Region C Water Plan, which will eventually become part of the 2022 State Water Plan.

WHY IS THIS PLANNING EFFORT SO IMPORTANT TO NORTH CENTRAL TEXAS RESIDENTS AND BUSINESSES?

Water is a major driver of our regional quality-of-life and essential to our continued economic prosperity, especially since major companies considering a potential relocation here look to see what our long-term water plan is. Yet, if no additional water supplies are developed, Region C will face substantial water supply shortages over the next 50 years, during which time the regional population is expected to double.

Based on an analysis conducted by the TWDB, the socio-economic impacts to Region C would be dire if we do not proactively address the region's anticipated water needs.

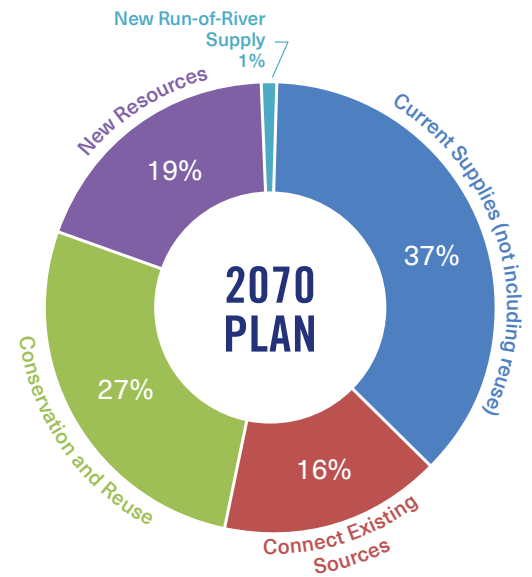
For instance, without new water supplies, North Central Texas would lose \$34.6 billion in income annually and would face annual employment losses of over 373,000 jobs by 2070. Additionally, tax losses to the region based on production and imports would reach nearly \$2.6 billion annually by 2070.

WHAT ARE THE RECOMMENDED WATER MANAGEMENT STRATEGIES FOR REGION C IN THE CURRENT PLAN?

The 2017 State Water Plan, which incorporates the 2016 Region C Water Plan, includes a variety of water management strategies to be implemented between now and 2070, to provide an adequate water supply that will meet projected water needs while allowing for potential future contingencies. Those strategies are critically important since currently available supplies alone will not meet future needs.

Of Region C's water supplies projected to be available by 2070 under the plan:

- *More than one-third* would come from **currently available supplies**
- *More than one-quarter* would be developed from **water conservation and reuse strategies** – perhaps the most ambitious conservation and reuse effort in the entire state
- *About one-fifth* would be provided through the development of **new reservoirs and run-of-river projects** (including major new reservoirs such as the Lower Bois d'Arc Creek Reservoir, Lake Ralph Hall, Lake Columbia, Lake Tehuacana and the development of Sulphur River Basin supplies, including the Marvin Nichols Reservoir)
- *The remainder* would come from establishing **new connections to existing water supplies** (such as Lake Palestine and Toledo Bend Reservoir)



WHERE ARE WE IN THE CURRENT REGIONAL WATER PLANNING PROCESS, AND WHAT ARE THE UPCOMING OPPORTUNITIES FOR PUBLIC PARTICIPATION?

Like all regional water planning groups statewide, the RCWPG conducts all its functions during public meetings in an open and participatory manner. The group also holds special meetings when developing its scope of work and holds public hearings before adopting its regional water plan. This public involvement helps direct the planning and determine which water management strategies to recommend.

The RCWPG has been working with the state on future population and water demand projections, and will be preparing and submitting a technical memorandum to the state in September 2018 detailing the region's currently available supplies and projected water needs for the next 50 years. Subsequently, the RCWPG will be analyzing potential water management strategies and developing its preliminary recommendations, which will be incorporated into a draft plan presented to the public in 2020.

For more information, including public meeting dates and planning documents, visit www.regioncwater.org.

KEY FACTS AND FIGURES

| | |
|---|----------------------------|
| Total Population of Region C (2010 Census) | 6,477,835 |
| Region C Population as a Percentage of State Population | 25% |
| Total Region C Water Use (2011) | 1.5 million acre-feet/year |
| Region C Water Use as a Percentage of State Water Use | 8.3% |
| Projected Region C Population by 2070 | 14,347,915 |
| Projected Region C Water Demands by 2070 | 2.9 million acre-feet/year |
| Currently Available Water Supplies in Region C | 1.7 million acre-feet/year |
| Projected Region C Shortfall by 2070, Absent New Water Supplies | 1.2 million acre-feet/year |
| Lost Income to Region C Without New Supplies by 2070 | \$34.6 billion/year |
| Tax Losses on Production and Imports Without New Supplies by 2070 | \$2.6 billion/year |
| Jobs Lost Without New Supplies by 2070 | Over 373,000/year |
| Total Cost of Improvements Identified in Region C's 2016 Plan | \$23.6 billion |

REGION C WATER PLANNING GROUP MEMBERS (AS OF MARCH 2018)

| Name | RCWPG Title | Representing |
|-------------------|--------------------|---|
| Jody Puckett | Chair | Municipalities |
| Russell Laughlin | Vice Chair | Industry |
| Kevin Ward | Secretary | River Authority |
| David Bailey | Member | Groundwater Mgmt. Area 12 |
| Chris Boyd | Member | Water Utilities |
| John Carman | Member | Municipalities |
| Bill Ceverha | Member | Public |
| Grace Darling | Member | Environment |
| Gary Douglas | Member | Groundwater Mgmt. Area 11 |
| Tim Fisher | Member | Municipalities |
| Tom Kula | Member | Water Districts |
| Harold Latham | Member | Groundwater Mgmt. Area 8 |
| John Lingenfelder | Member | Public |
| G. K. Maenius | Member | Counties |
| Steve Mundt | Member | Small Business |
| Bob Riley | Member | Environment |
| Drew Satterwhite | Member | Water Districts |
| Rick Shaffer | Member | Municipalities |
| Gary Spicer | Member | Electric Generating Utilities |
| Connie Standridge | Member | Water Utilities |
| Jack Stevens | Member | Water Districts |
| Dr. Tom Woodward | Member | Agriculture |
| Darrell Dean | Non-Voting Member | TDA representative |
| Mike Harbordt | Non-Voting Member | Region I |
| David Nabors | Non-Voting Member | Region D |
| Rusty Ray | Non-Voting Member | Texas State Soil & Water Conservation Board |
| Walt Sears | Non-Voting Member | Region D administrative agency |
| Gary Spicer | Non-Voting Member | Brazos G RWPG |
| Connie Townsend | Non-Voting Member | Texas Water Development Board |
| Kevin Ward | Non-Voting Member | Region H |
| Adam Whisenant | Non-Voting Member | Texas Parks & Wildlife Department |

www.regioncwater.org

www.twdb.texas.gov/waterplanning/rwp